

NAVVIS

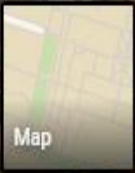
Digitizing the great indoors

Navigation bar with icons for walking, driving, public transit, and a search icon. Below the icons, it shows the selected mode: **via Lomita Mall** and the estimated time: **6 min**.

7 min
0.3 mile

6 min
0.3 mile

6 min
0.3 mile



Durand Bldg

Lomita Mall

Google

Escondido Mall

Escondido Mall

Memorial Church

Stanford University

Serra Mall

Oval Park

Georg

Map navigation controls including a compass, a red location pin, zoom in (+) and zoom out (-) buttons, a street view pegman icon, and a home button.

FIRE ESCAPE PLAN

Ground Floor

SAFETY NOTICE

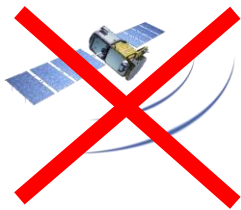
This drawing is based on the example found in BSI ISO 23601

It was created using Visual Building Basic and an addon Fire Escape symbol catalogue.



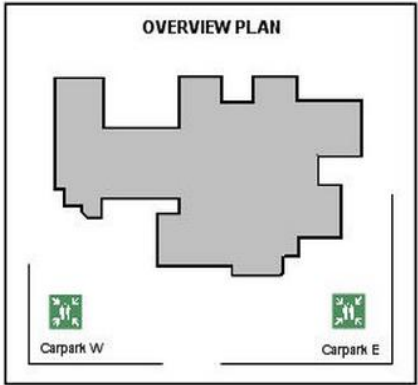
LEGEND

- You are here
- Escape route
- Emergency exit
- Emergency exit
- First aid kit
- Fire extinguisher
- Fire alarm
- Fire blanket
- Emergency exit
- Emergency exit



No GPS reception

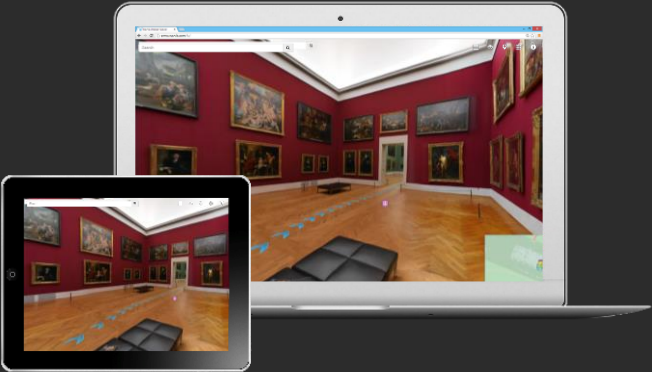
BSI ISO 23601 Example	
Drawn by:	Les Player with Visual Building
Date drawn:	27th October 2012
Date revised:	
Plan No:	201210271



Next-level Indoor digitalization



M3 Trolley



IndoorViewer



Navigation App

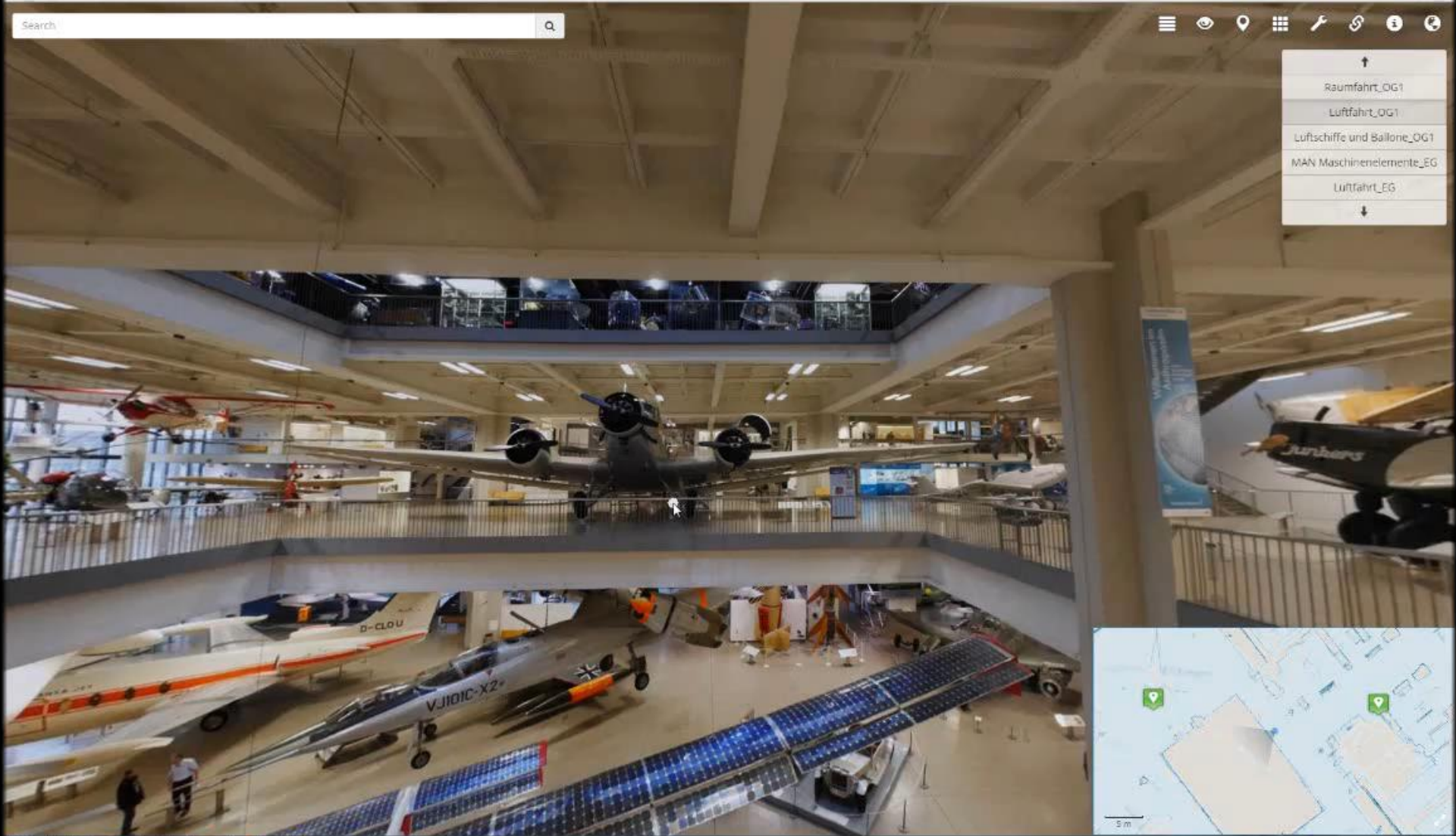
NavVis

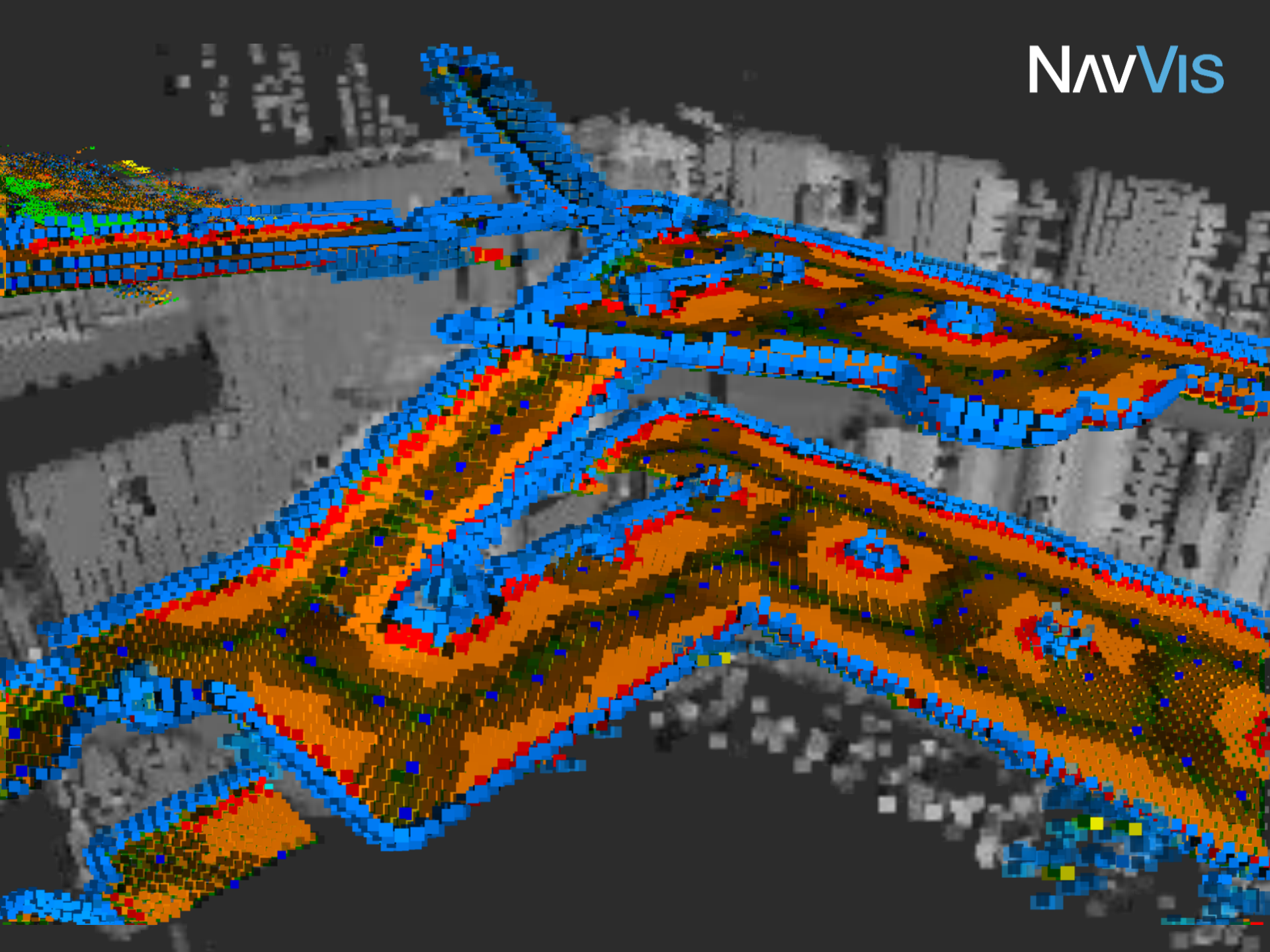
3D Mapping Trolley

Search



- ↑
- Raumfahrt_OG1
- Luftfahrt_OG1
- Luftschiffe und Ballone_OG1
- MAN Maschinenelemente_EG
- Luftfahrt_EG
- ↓









Search



 **Leather chair**



Edit

Delete

View

Route



möbel
mann

Details at a glance

Article-No.: M-NH-000444-C

Material:

Cover: Leather

Frame: Stainless Steel, brushed

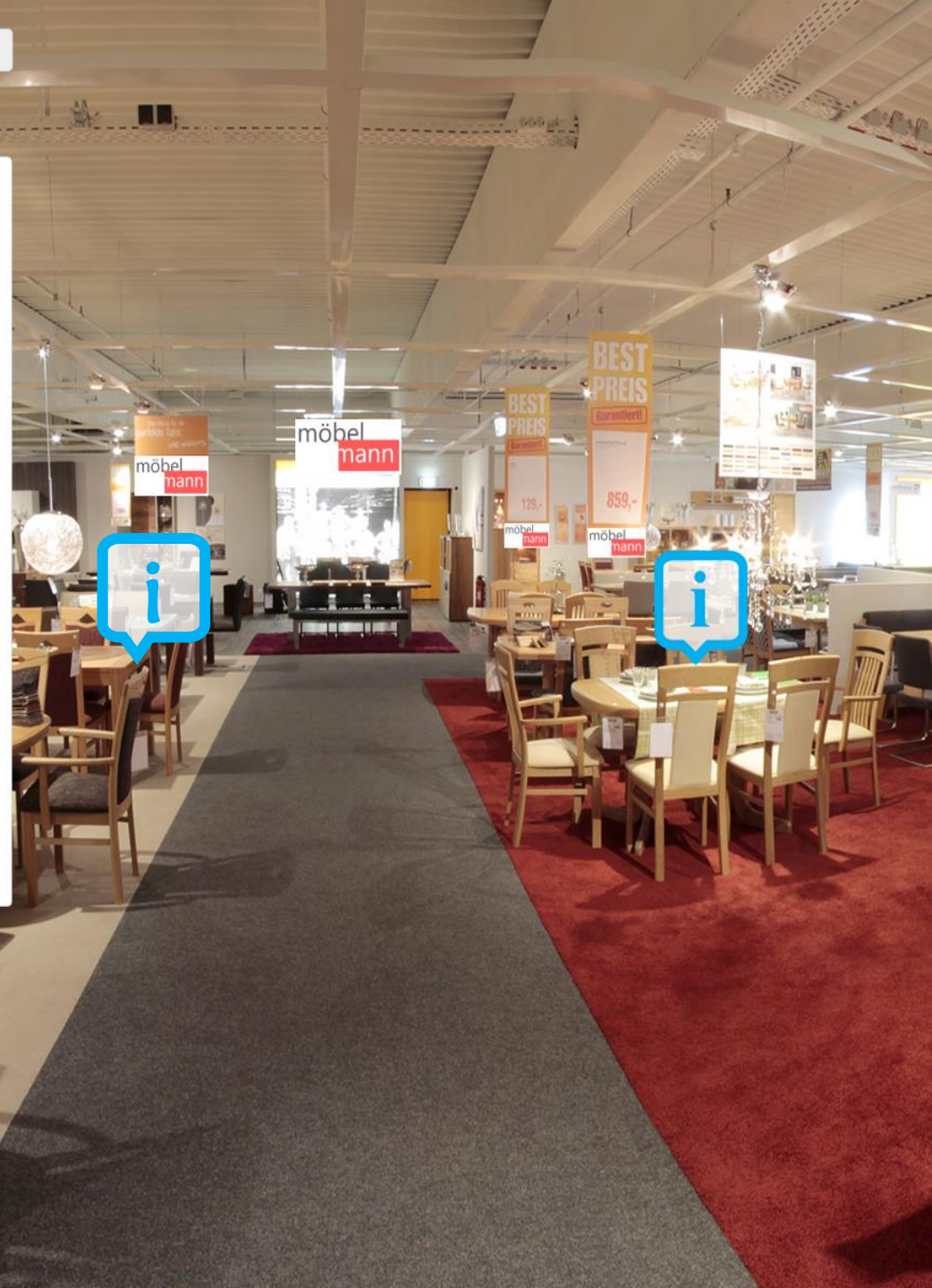
Color: black

Condition:
assembled



349,99€

BUY NOW




**TORNOS DECO 2000 – CNC machining center****Main spindle (Z11/S11/C11)**

Max. bar capacity	mm	25,4
Standard workpiece length with rotating guide bush	mm	200
Spindle speed of rotation	rpm	0 to 10 000
Spindle output S11/S41	kW	9,5 (12,8)
Max. constant torque	Nm	15,1 (20,4)
Spindle stoppage time (8 000 rpm to 0)	sec	1
Mild steel drilling capacity	mm	14
Mild steel tapping capacity		M12

#22344



 Montagesation 27 - Armaturenbrett

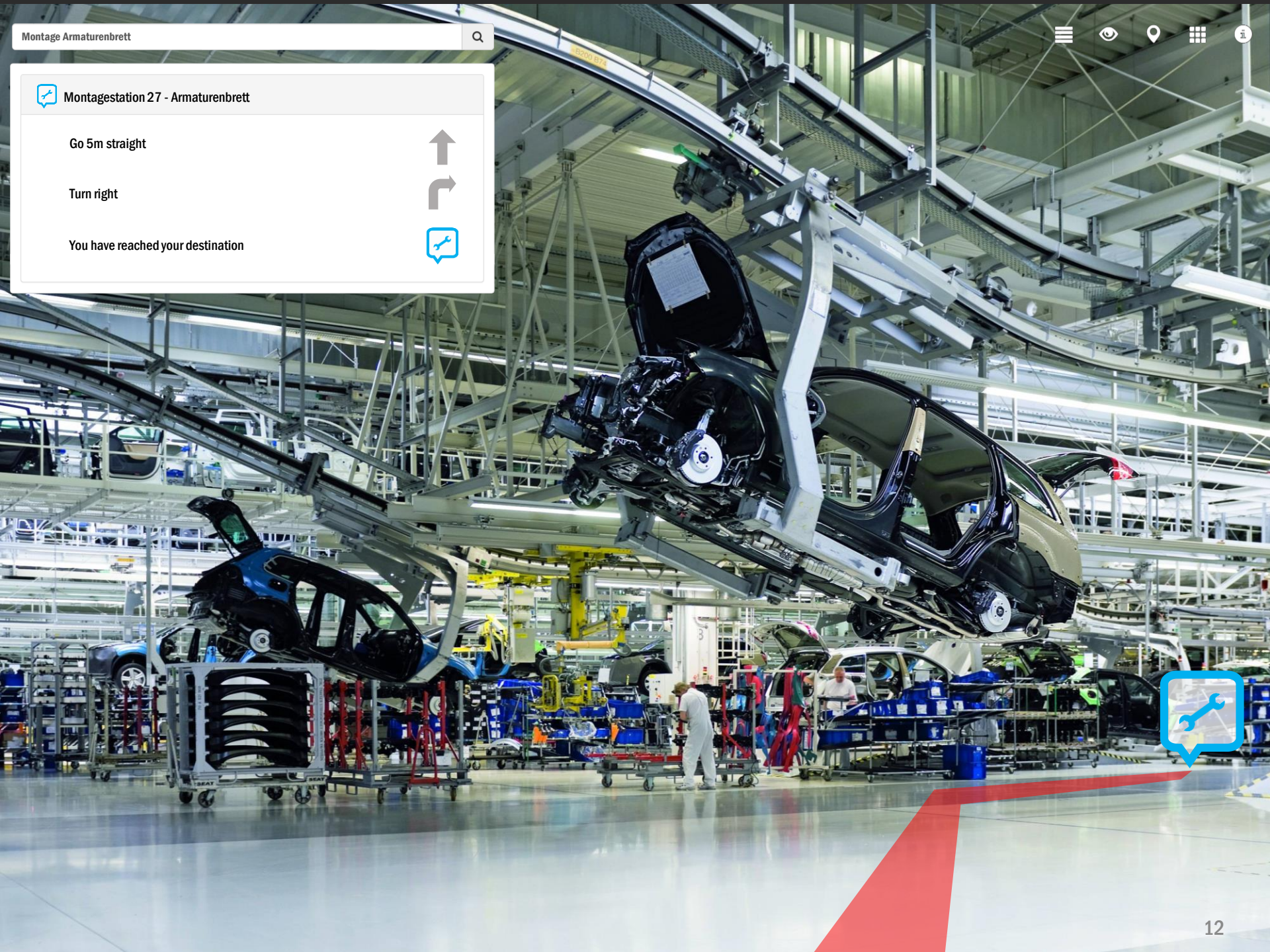
Go 5m straight



Turn right



You have reached your destination



✍ Edit 🗑 Delete 🔍 View ↻ Route ✕



Show ventilation plan


Comments

Peter Mueller, 27.10.2014 - 10.25 am

Fresh air pipe is leaking - please exchange the whole pipe

Comment



 Fix clearance!

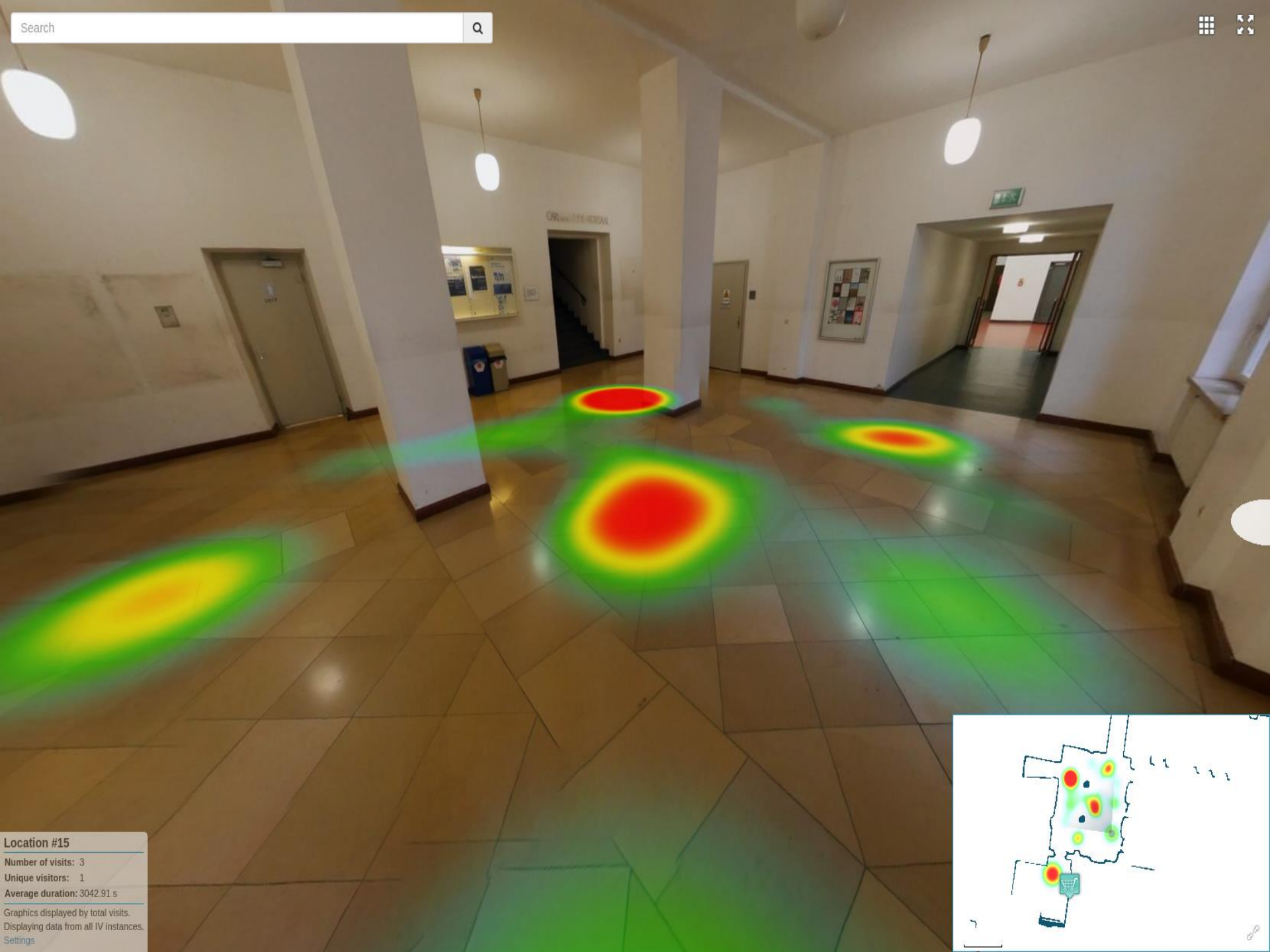
1250 mm

14. July

11. August

15. September





Location #15

Number of visits: 3
Unique visitors: 1
Average duration: 3042.91 s

Graphics displayed by total visits.
Displaying data from all IV instances.

[Settings](#)



Digital indoor today

Expensive

€ 4 per m²

Slow

Usually more than a month to get data

Only experts

Point cloud or CAD software hard to use

Not open

No open APIs, not web based

No position

Not helpful for field workers

NavVis digital indoor tech is game changing

Low cost

€ 4/m²

€ 0,10/m²

Cutting mapping cost by factor 40

Fast

30 day

1 day

Data next day

For all

Browser based. No plugins. Everyone, any device.

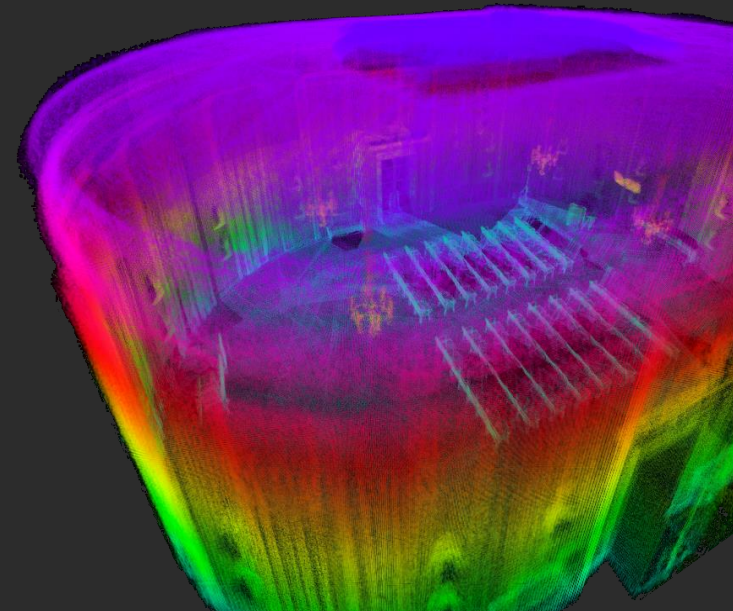
Open

HTML 5. Open APIs. Deep virtual HTML links.

Positioning

NavVis App: Vision based. Meter accurate. No hardware.

- ✓ Located in Munich, Spin-off from TU Munich, VC backed since Q3 2014
- ✓ Patented tech; >7 years of public funded research (>150 man years of R&D), >10 PhD theses, >40 master theses, >35 peer reviewed publications, ...
- ✓ Market entry Q4 2014, gained top industry leaders as customers by Q3 2015
- ✓ Started build out of international partner network to >15 today
- ✓ Forged first strategic partnerships with key players inc. Esri, Intershop, Siemens, ...
- ✓ High profile team of >70
- ✓ Backgrounds from top international research / business institutions (incl. Stanford, Harvard, LSE, St. Gallen, UCLA, Microsoft, HP, McKinsey)



Why not Silicon Valley

Research

Talent

Customers

Suppliers

NAVVIS

Digitizing the great indoors

Dr. Felix Reinshagen

Phone: +49 151 1211 7687

Email: reinshagen@navis.com

NavVis GmbH | Blütenburgstr. 17
80335 München | www.navis.com

Appendix



M3 Trolley

- Indoor digitalization at scale – scans up to 50.000 m² on a single day
- Creates inch-perfect 3D data
- Captures high resolution panoramic images with a brilliant visual quality
- Very easy and intuitive to use – press record and capture data on the go
- Automated data-processing optimized for web and CAD import



Search



IndoorViewer

- Browser-based viewer to access and explore your buildings in 3D on any device
- Interact with points-of-interest and connect them to real-world objects
- Route between any two locations
- Measure distances and volumes
- Share your location and points-of-interest via Mail or Facebook
- Provides a powerful API to integrate IndoorViewer into your SAP, facility management tools, or any other existing infrastructure

[Test here](#)



NavVis App

- First indoor navigation app that does not require infrastructure
- Meter-accurate thanks to patented computer vision based algorithms
- Highly scalable due to extremely low set-up costs
- Instantaneous localization – saves battery and nerves!
- Virtual reality interface for easy orientation
- An ecosystem for 3rd party location-based services

250 billion m²

total global floor space

50 billion m²

will be fully digital by 2020

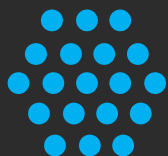
Scalable go to market model

Customer Segment

Go to Market Approach

Focus

Consumer



Direct through app and referral engine

Access to large consumer revenue pool

SME



Partners

Scalability in sales and service

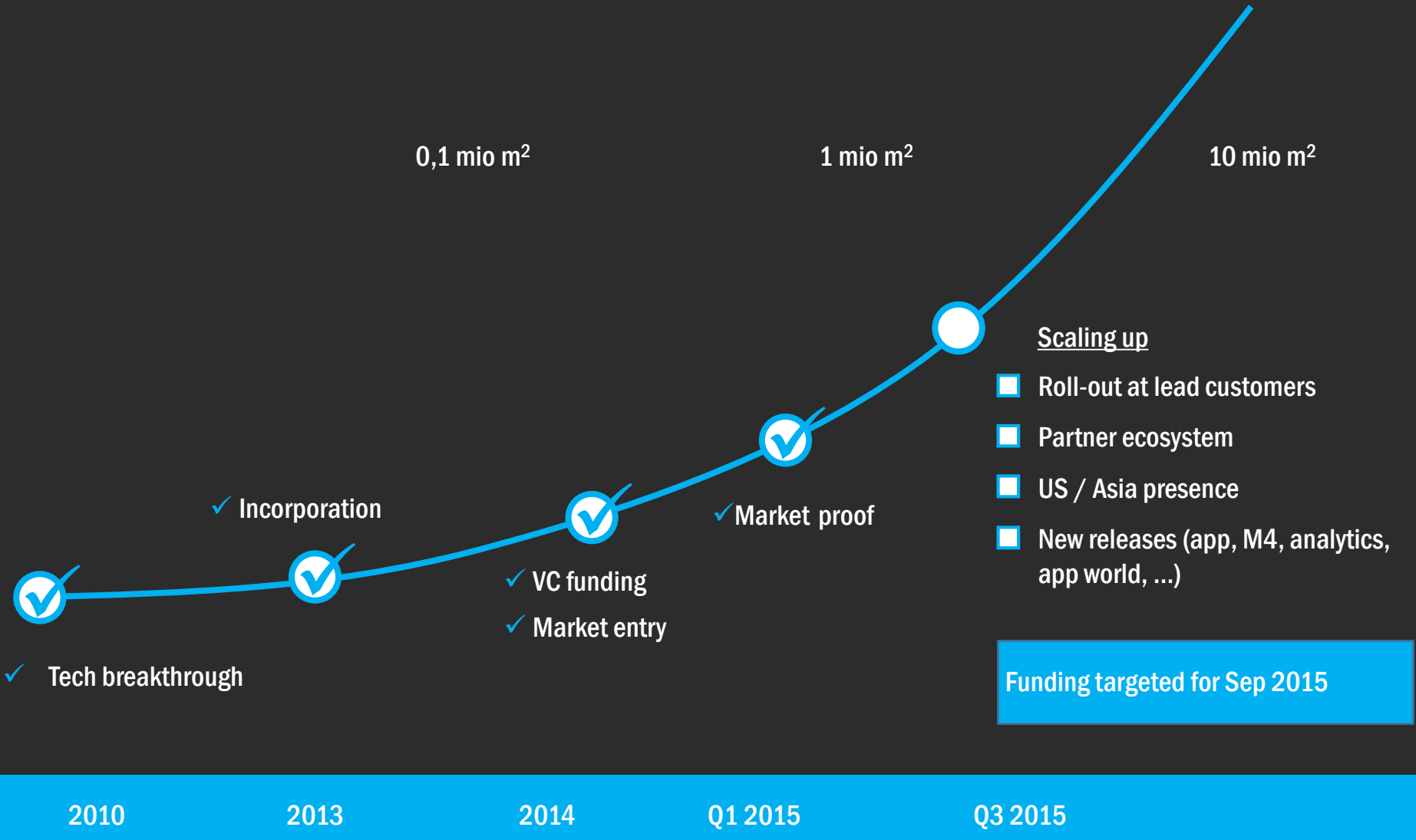
Enterprise



Direct with service and value added solutions through partners

Relationship to key accounts; learning / market knowledge

Towards NavVis in every room



Indoor
value chain

Earning (> cost)



Run: 80% of cost

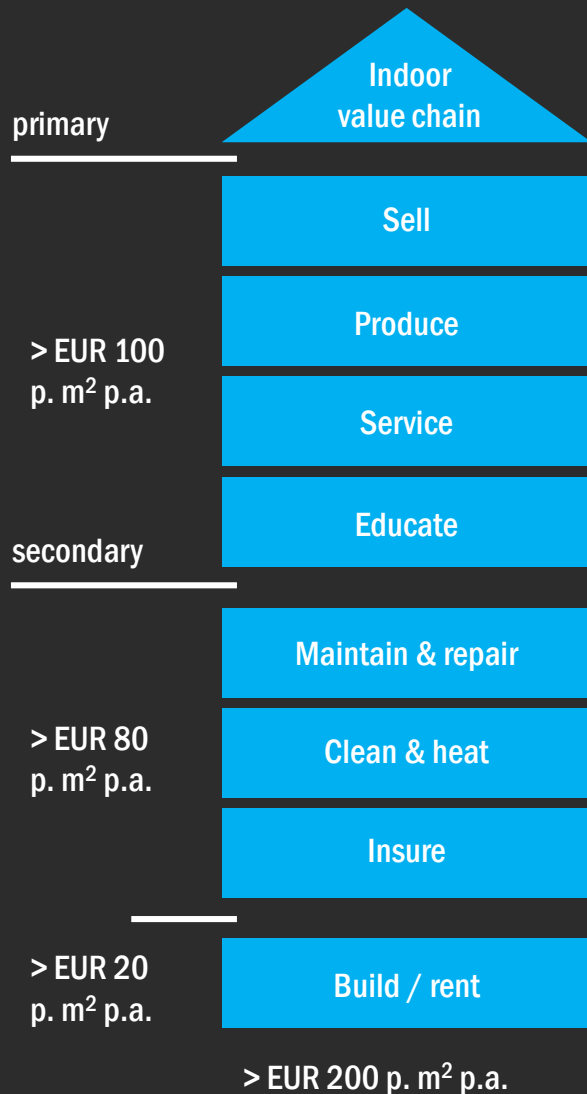


Build: 20% of cost



> € 200 per m² p.a.

Digital value creation indoors



Benefits of digitalization (examples)

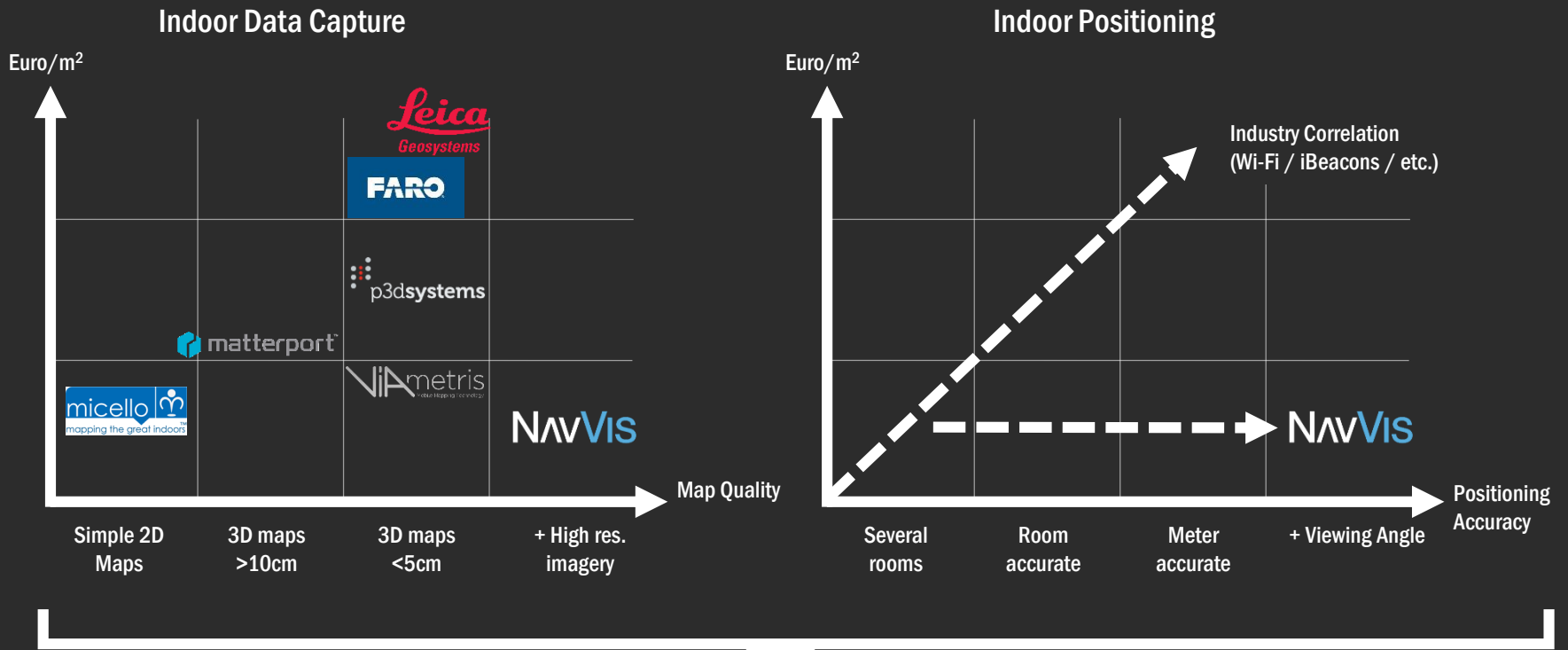
- Improve multichannel retail experience
- Digitally plan / manage production assets
- Leverage virtual visits and smart location based services
- ...
- Replace 80% of onsite visits through remote visits
- Allow insurance premiums for digitally documented buildings
- ...
- Allow remote visits, documentation, collaboration on construction sites
- Document real estate transactions
- ...

> € 1 trillion
addressable market

Assuming only 10%
digital value share of
today's value
creation

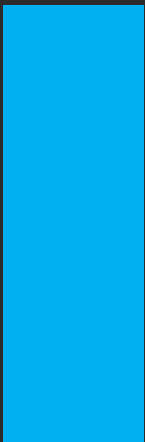
Digitalization will
further expand
value creation

Competition



NavVis provides the only full stack offering in the indoor space

Superior cost to quality ratio



€ 3,00

Faro/Leica



€ 0,25

Matterport



€ 0,03

NavVis



Cost reduction vs. state of the art technology by two orders of magnitude

Cost per m²

- Mobile: Maps 15.000 – 50.000m² /day
- Easy to use: Low wage labor
- Real-time: Mapping data instantly available

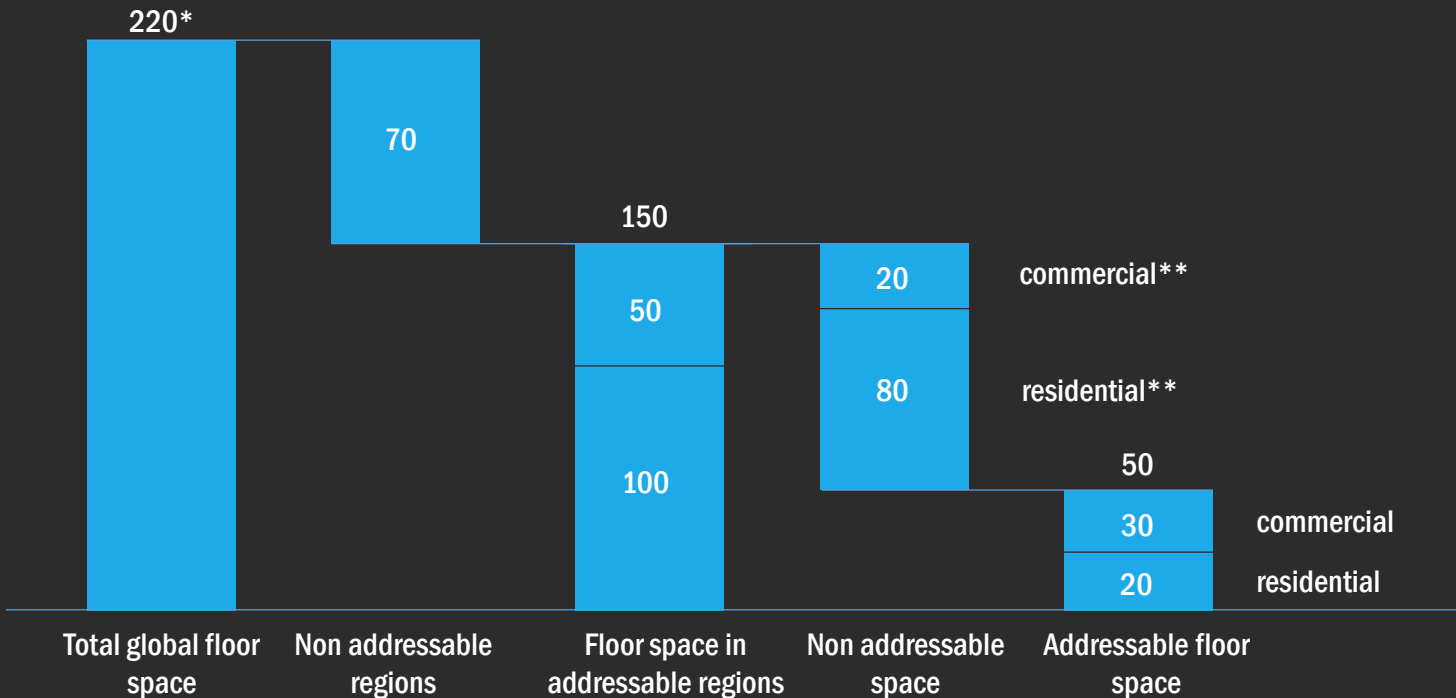
Quality

- Cm accurate 3D mapping data
- Ultra high-resolution 720° panoramas
- Wi-Fi/Bluetooth scans, floorplans, etc.

Indoor space will go digital

Outdoor space is digitally captured and easily available on all our devices today. Economically even more valuable indoor space – counting in billions of square meters – is still a digital wasteland.

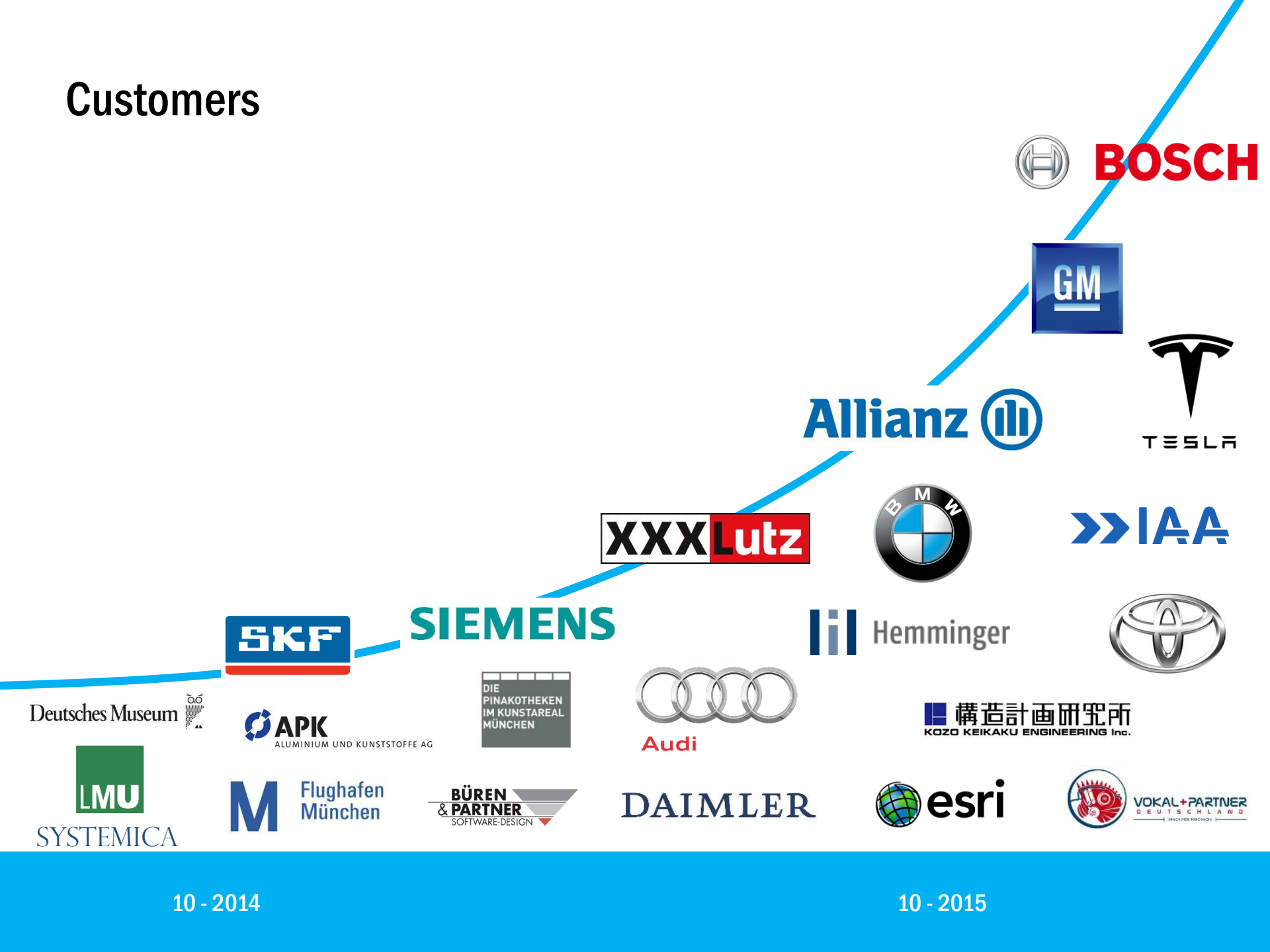
Global total addressable market 2020 (m²)









* Statistical data provides a wide range of estimations of global floor space from m² 150 bn to 300 bn globally

** Non addressable commercial space refers to (very) small shops / office space; non addressable residential space refers to small to medium sized private space

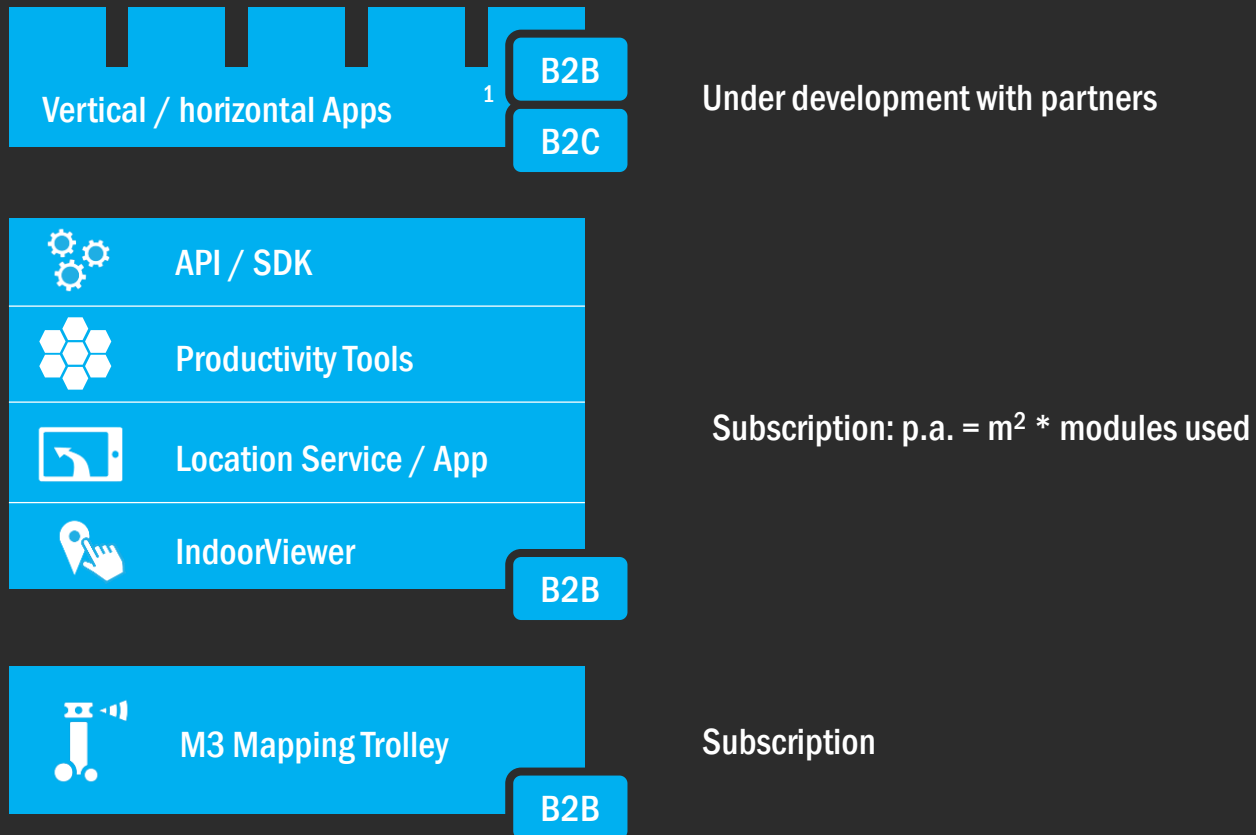
Customers



Application World: Global Partners

Developer	Developer & Product Description
	Web-based indoor/outdoor geo solution
	E-commerce plug-in for IndoorViewer
	Building a trade show viewer on NavVis
	Integration into building management product offering
	Analytics and retail solutions in cooperation with SAP Hybris
	Task management, crowd based object detection, tour-builder

Business model



1 verticals / horizontals include: Facility Management, Retail, Industry, Repair & Maintenance, Construction, exhibitions, big data, ...

Backers, Awards & Media

NAVVIS

Backed by renowned venture funds and industry leaders

Honored by multiple prestigious awards

Featured by national and international media

TARGET PARTNERS



SAT.1



- Target Partners, MIG Fonds, BayBG
- Technical University Munich, DLR, ESA, BayStartUp, ...
- Angels incl. Don Dodge (Google Dev advocate), Juergen Gallmann, (former CEO Microsoft Germany) and Lothar Stein (former Director McKinsey)
- ...

- DLD Digital Star 2016
- European Space Agency Award
- VDI Award
- VDE Award
- E.On Future Award
- Best of Munich
- ...

- TechCrunch
- WiWo
- Technology Review
- Frankfurter Allgemeine Zeitung
- Süddeutsche Zeitung
- Computerwoche
- ...