



# DTAG'S JOURNEY TO THE 4 PILLARS OF DIGITALIZATION

Heiko Burdack, Senior Vice President Digital Division, T-Systems International GmbH  
München, 23.11.2016



LIFE IS FOR SHARING.

# DIGITALIZATION 2016

## POTENTIAL

**1.7 T€**

economic value added  
by digitization by 2020

**38.5 BN**

devices connected to  
the internet 2020

**367.2 EB**

mobile data traffic  
in 2020 (CAGR 53%)

**43 BN€**

European IoT market revenues  
by 2020

**42 BN€**

IT Expenditures for Industry  
4.0 in 2019 (CAGR 18%)

**VS**

## REALITY

**0.65 BN€**

Invest in Industry 4.0  
in Germany (2015)

**<10%**

of collected data is analyzed

**30%**

of all Shop Floors are  
using Cloud Computing

**59%**

of german companies are  
having concerns regarding  
data security

**66%**

of German companies are  
oblivious to IoT

# 4 PILLARS TO ENABLE DIGITALIZATION

## DTAG'S CUSTOMERS

**KONE**

**Rieber**

**DB SCHENKER**

**SEUSTER**

...AMONG MANY OTHERS

## CUSTOMER PROBLEMS

"Too many specialized providers on the market, **CAN I BUY EVERYTHING FROM YOU?**"

"I do not know what I need, can you help me with my **DIGITIZATION STRATEGY?**"

"I want to **VISIBLY SEE** what and how my machines are doing, so I can **PROACTIVELY** act."

"I want my data to be **SECURELY LOCKED**. Can I make sure that I always control and own my data?"

"I want my **MACHINES TO SPEAK WITH ME.**"

## 4 PILLARS

1 |  | **EASY TO USE**

2 |  | **REDUCED COMPLEXITY**

3 |  | **AFFORDABLE**

4 |  | **FUTURE-PROVEN**

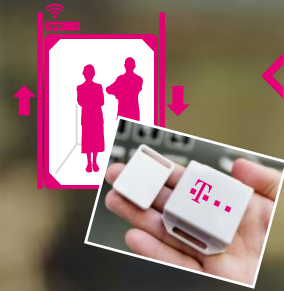
SECURE

# EASY TO USE



## PREDICTIVE MAINTENANCE

**DATA POOLING**  
COLLECTING & TRANSMITTING



**PARAMETER ANALYSIS**  
ANALYSIS OF COLLECTED DATA



**PATTERN RECOGNITION**  
AND ACTION TRIGGERING



## IOT LAB APPROACH

### MODERN DESIGN LAB

- One focus week with results and a working prototype
- Design Thinking with customers and partners
- Rapid Prototyping & Hackathons

### DIFFERENTIATOR

- We offer and combine the best of breed
- We work with modules and offer E2E
- Micro-Factory Booster

**KEEP SOLUTIONS EASY TO USE AND TRY IT OUT**

# REDUCED COMPLEXITY



CUSTOMER

## IOT PLATFORM SERVICES



### IOT STACK

- Best Analytic, ML and AI capability with a German data trustee
- Best IoT services maturity on a partner platform so far



### IOT STACK

- Stack for Devices & Gateway Management
- Gateway as a Service Model
- Sensor Networks



### IOT STACK

- Stack for Devices & Gateway Management
- Sensor Networks

## PAAS/IAAS



## DT DATA CENTER

## MISP

### ONE-STOP IOT SHOP

- ✓ The Multi IoT Service Platform is a best of breed composition
- ✓ Integration with T-Connectivity
- ✓ Fast & accelerating Product Development Times (2-3 Months)
- ✓ For product-leverage and acceleration
- ✓ DTAG-proven security
- ✓ Operated by DTAG

## ONE-STOP IOT SHOP

best of breed ecosystem in a leading edge design out of one hand



LIFE IS FOR SHARING.

# AFFORDABLE

## LOW DATA RATES



600 BIT/S UP TO FEW 100 KBIT/S\*

## LOW POWER CONSUMPTION



LONG BATTERY LIFETIME  
(10 YEARS, 2 AA BATTERIES)

## LOW COST



TARGET FOR MODEMS (<€4\*\*)

## DEEP INDOOR PENETRATION, EXTENDED COVERAGE



+ 20DB LINK BUDGET  
COMPARED TO GSM

## BI-DIRECTIONAL COMMUNICATION



UPLINK AND DOWNLINK  
(SOFTWARE UPDATES)

## STANDARDIZED



3GPP RELEASE 13

## LTE BASED SECURITY



SIM BASED, AUTHENTICATION,  
INTEGRITY, CIPHERING

## HIGH NUMBER OF DEVICES



~100.000 CONNECTED PER CELL

## PUBLIC NETWORK



IN OPERATOR MANAGED  
LICENSED SPECTRUM

## EASE OF USE



DIRECT USE - NO COUPLING TO HUB  
(E.G. ROUTER, SMARTPHONE)

\*depends on cell load and radio condition \*\*Industry target and requirement in 3GPP. Has to be approved by module suppliers.

## NB-IOT: THE GAME CHANGER

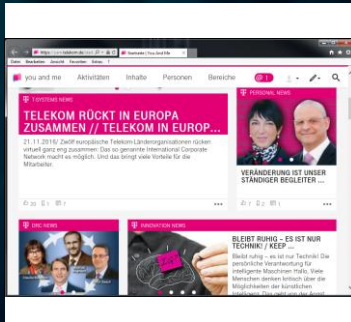
Low Cost, Low Bandwidth, High Speed, Massive Digitalization



LIFE IS FOR SHARING.

# FUTURE-PROVEN

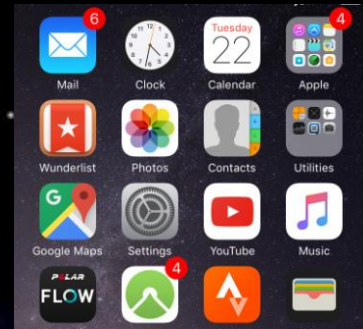
**YESTERDAY  
BROWSER-BASED**



LATENCY

> 30MS

**TODAY  
APP-BASED**



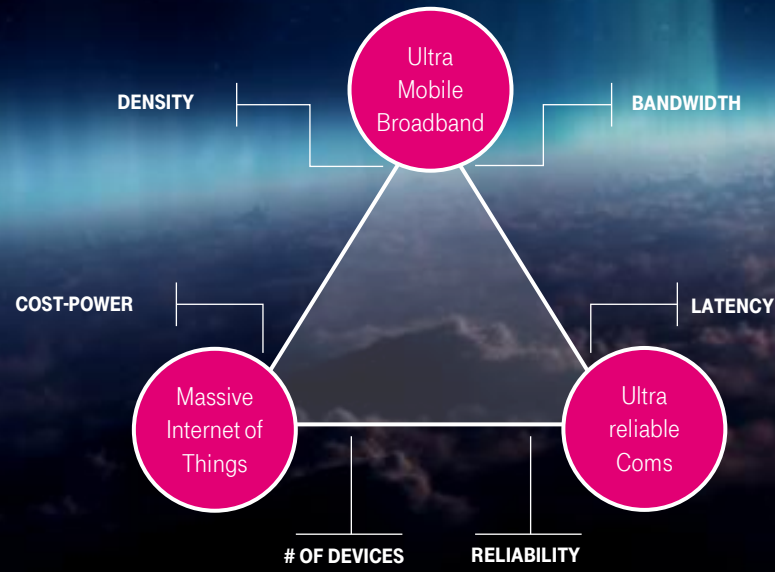
20-30MS

**TOMORROW  
REALITY-BASED**

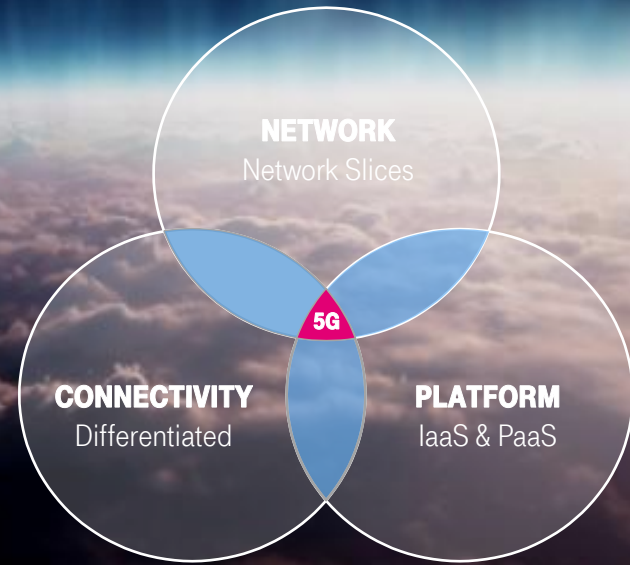


> 1MS

**5G ENABLED  
USE CASES**



**5G ENABLED  
BUSINESS  
MODELS**



**5G WILL SUPPORT MOBILE BROADBAND GROWTH, EXPAND INTO NEW USE CASES AND ENABLE NEW BUSINESS MODELS**

# COLLABORATION IS KEY

THANK YOU



LIFE IS FOR SHARING.





**BACKUP**

# SECURE

**78%** are **CRIME** or **ESPIONAGE** related  
June 2016 – www.hackmageddon.com

## CYBER ATTACKS

**OVER 70%** of organizations report having been **COMPROMISED** in 2015  
2015 Cyberthreat Defense Report

## INCIDENTS & BREACHES

**60%** provide user interfaces that were **VULNERABLE**  
2015 HPE IoT Research Study

## DEVICES

**24%** of cyber attacks manufacturing, transportation, utilities  
June 2016 – www.hackmageddon.com

## INDUSTRIAL IOT

**40 VENDORS** **300+ MEDICAL DEVICES** have hard-coded passwords  
2013 - C-ICS-ALERT-13-164-01

## HEALTH CARE

**YEAR 2016** machines close and search for security hazards automatically  
2016 – DARPA Cyber Grand Challenge

## AUTONOMOUS HACKING



## STATE-OF-THE-ART SECURITY IN GERMAN CLOUD

incl. Data Trustee concept secures customer data

**SECURE**

**SECURE HOSTING IN BIERE**



**DT NETWORKS**

**DTAG**

**SECURE CONNECTIVITY AND ENCRYPTED DATA TRANSFER PROVIDED BY DT NETWORKS**

# IT VS. OT

## CONNECTING INFORMATION- AND OPERATIONAL TECHNOLOGY ENABLES INTELLIGENT DATA ANALYSIS AND PROCESS CONTROL.

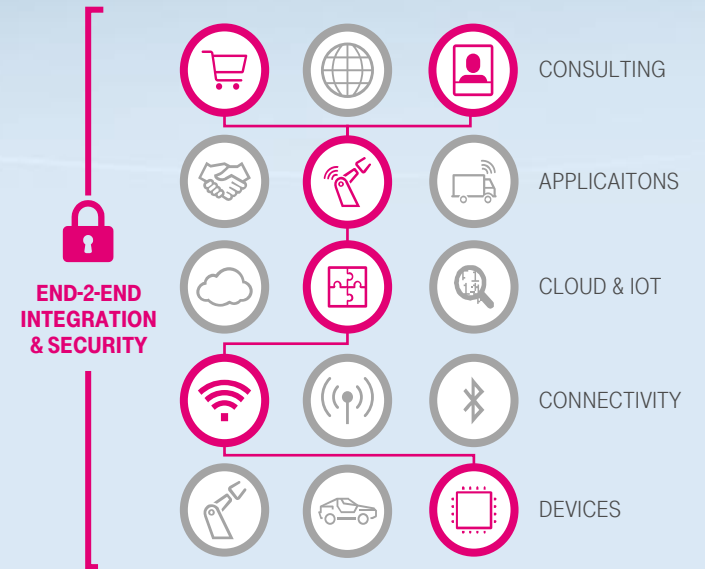
Connecting both worlds increases the risk of security gaps.

For the last 50 years, IT and OT have remained separate and different worlds

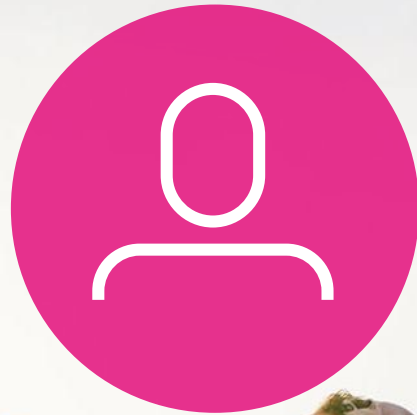
DTAG CLOSSES THE GAP AS **E2E PROVIDER** WITH HIGH SECURITY DATA CENTER AND **DATA SECURITY** „MADE IN GERMANY“

IT has to think as OT does and vice versa

An Industrial Internet is not possible if IT and OT work in silos



# WIR HABEN BIER „SMART“ GEMACHT!



**108**

LITER / P.A.



**× 6**

LAGERLOGISTIK



**53**

BIERSORTEN

# ...MIT SCHLAUEN, DIGITALEN LÖSUNGEN



INTELLIGENTES  
STAPLERLEITSYSTEM



M2M & LASERTECHNOLOGIE  
MIT ERP-SYSTEM VERKNÜPFT



DIGITALE  
LAGERVERWALTUNG



# ...FÜR DEUTLICHEN KUNDENNUTZEN

**+13%**  
HEKTOLITER



**+23%**  
LAGERKAPAZITÄT



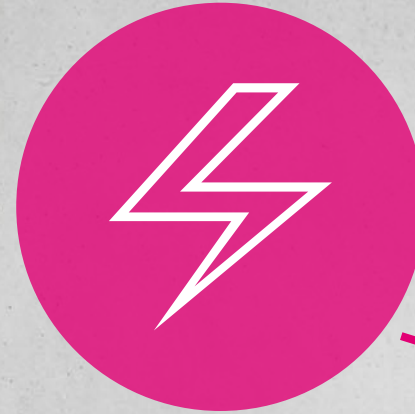
**-15%**  
CO<sub>2</sub> EMISSION



**-20%**  
LEERFAHRTEN



# DER AUSFALL EINES FAHRSTUHLS WIRD STATISTISCH ERST NACH MEHREREN STUNDEN BEMERKT



**60%**

**FEHLERHAFTE  
FAHRSTÜHLE**



# EIN SMARTER AUFZUG MELDET EINEN AUSFALL NICHT NUR IN ECHTZEIT...

TÜRSCHLIESS-  
VORGANG



WARTUNG



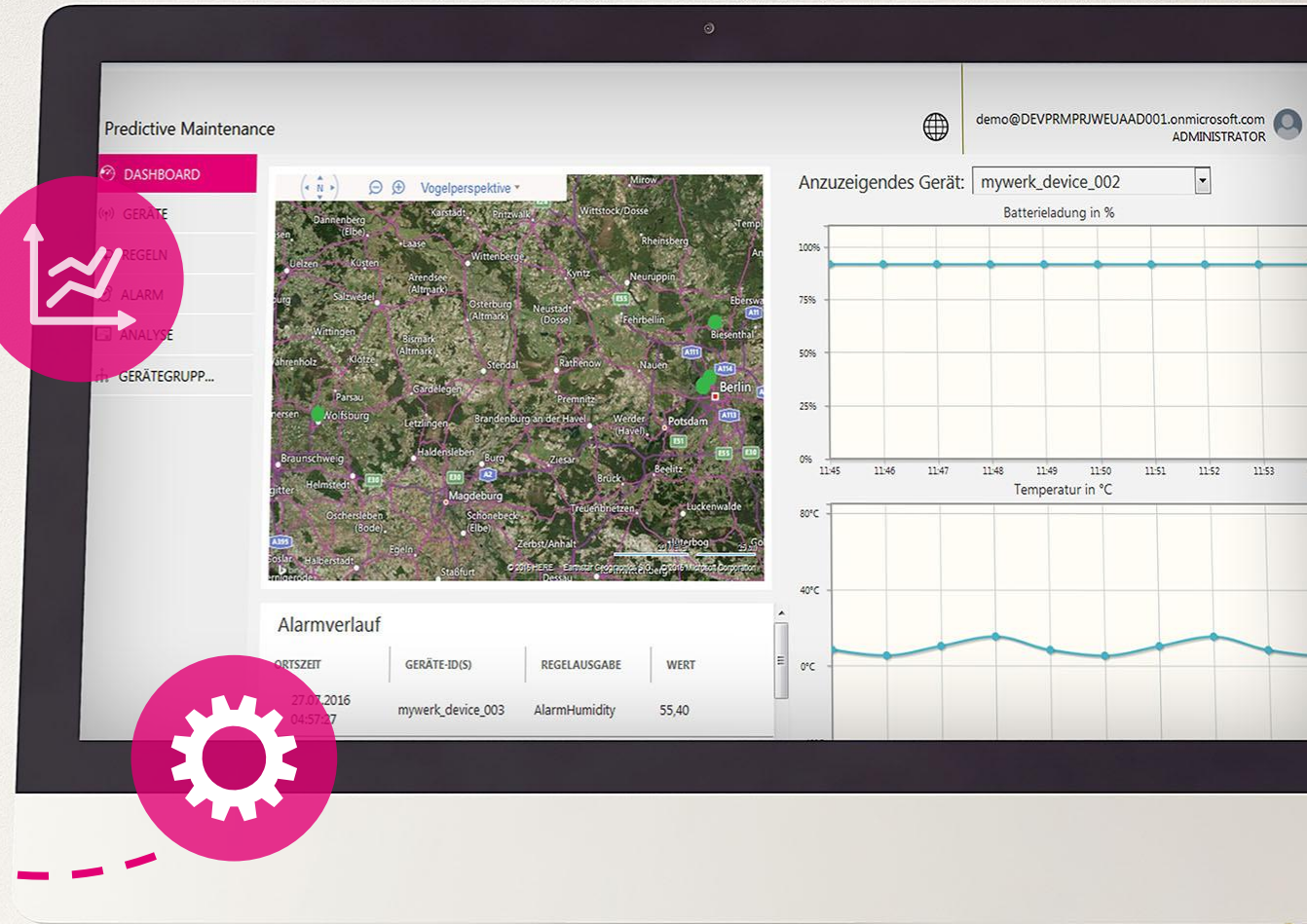
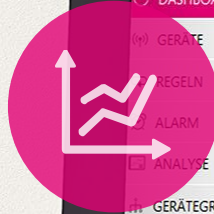
TEMPERATUR



GEWICHT



# ...SONDERN ERKENNT FEHLER BEVOR SIE ZU AUSFALLZEITEN FÜHREN



# SIND MEINE DATEN SICHER? WAS IST DIE RICHTIGE IOT-STRATEGIE?



**76%**  
der Befragten  
erwarten von ihrem  
Cloud-Anbieter  
**DEUTSCHE  
RECHENZENTREN**



**5%**  
der Befragten schöpfen  
**IOT-POTENZIALE**  
aus



**95%**  
**ENTWICKLUNGS-  
POTENTIAL**



**73%**  
investieren lieber  
in **SICHERHEIT**,  
bevor Sensorik oder  
Netze angeschafft  
werden





**SCHNELLE  
PRODUKTIONSABLÄUFE**



**FLEXIBLES  
PRODUKTPORTFOLIO**



**PREDICTIVE  
MAINTENANCE**



**SICHERHEIT**



**DATA  
ANALYTICS**

**SKALIERBARE CLOUD-LÖSUNGEN FÜR OPTIMALE  
VORAUSSETZUNGEN IM GLOBALEN WETTBEWERB**