

Wetter Hittfeld, Nieder...

i-tms - Das...



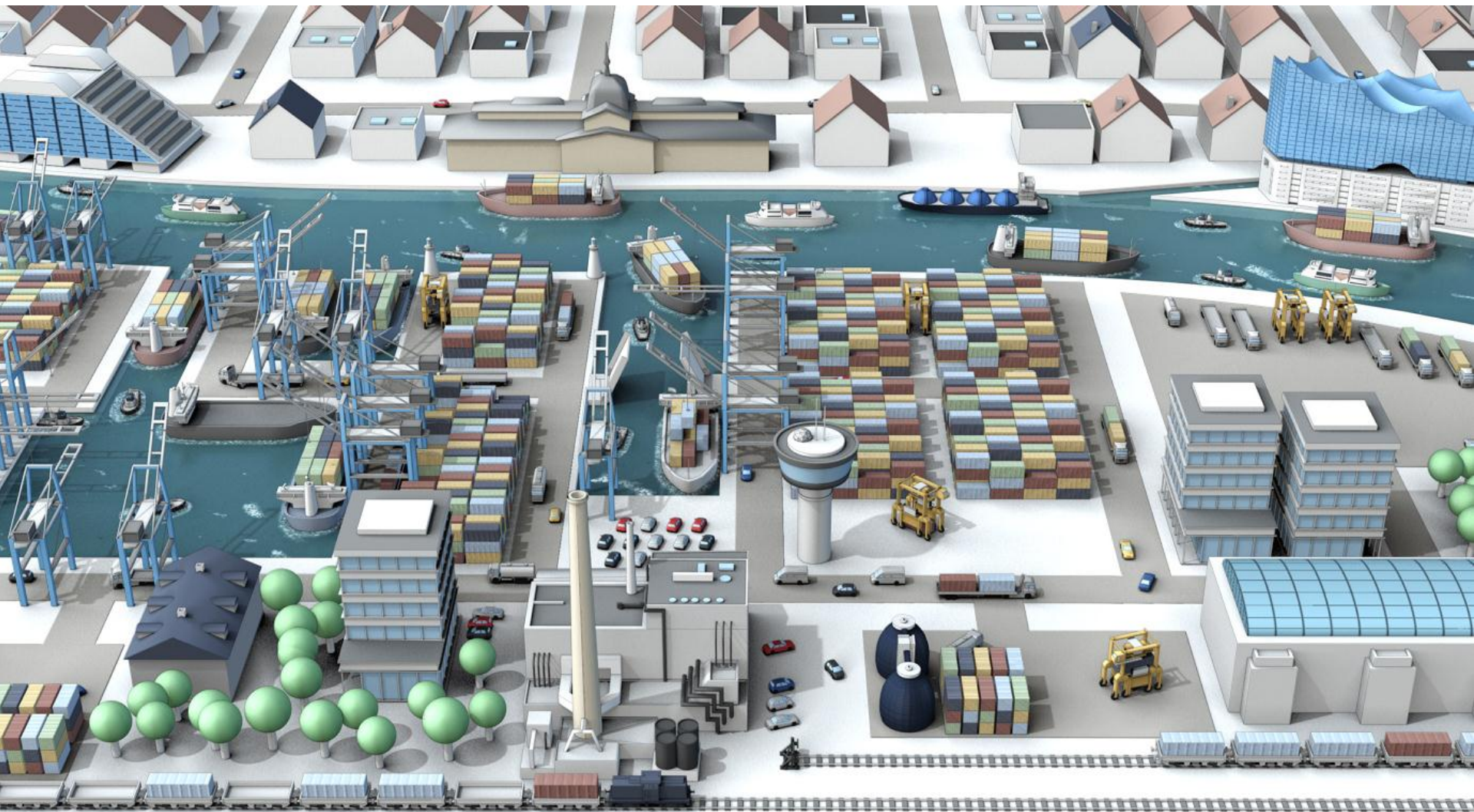
# SMART PORT LOGISTICS – CLOUD SERVICES FOR A SMART APPROACH CONTROL WITHIN HAMBURG HARBOUR

Markus Lindemann, GCC Embedded & M2M Solutions

**T · Systems ·**

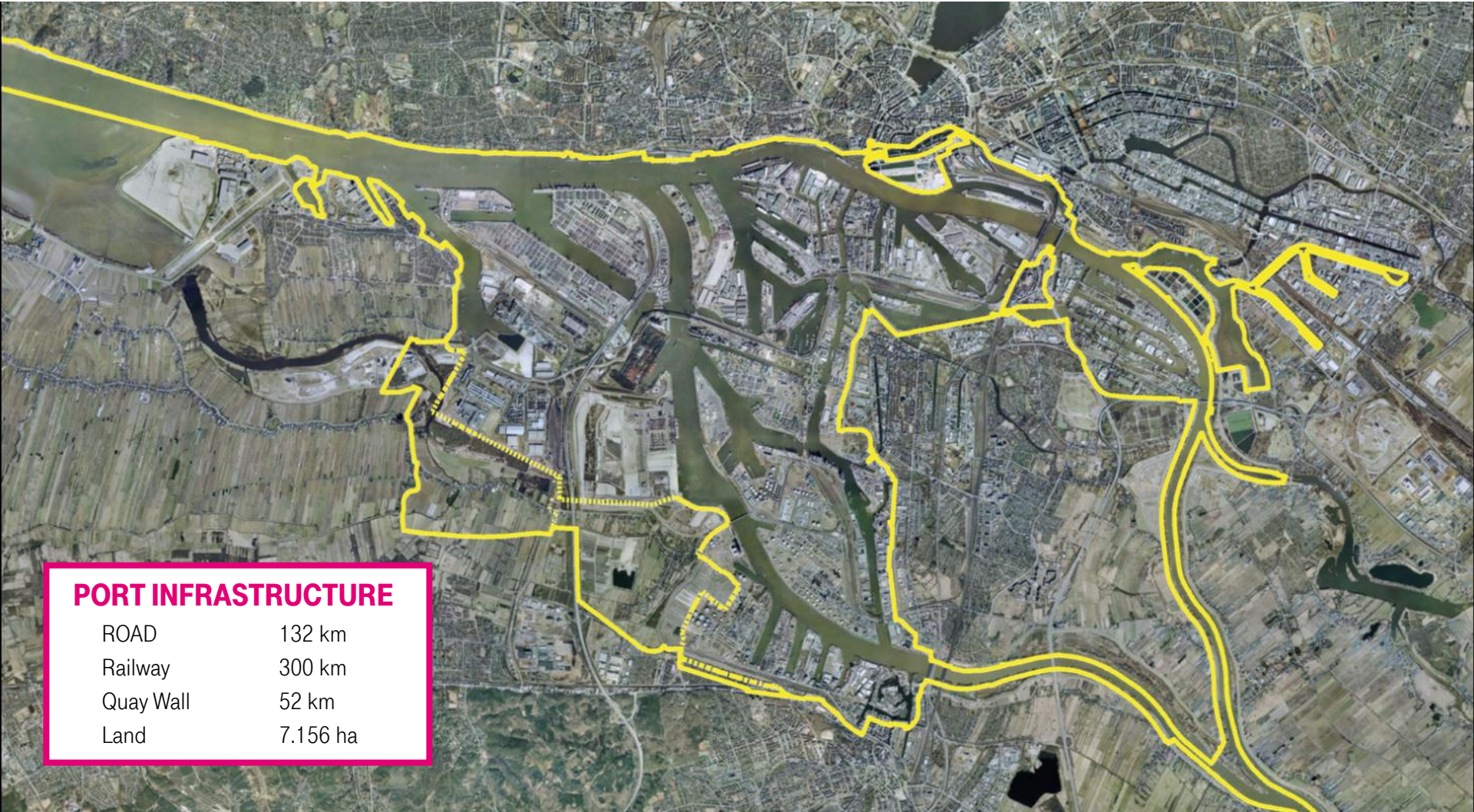
# SMART PORT LOGISTICS

POWERED BY



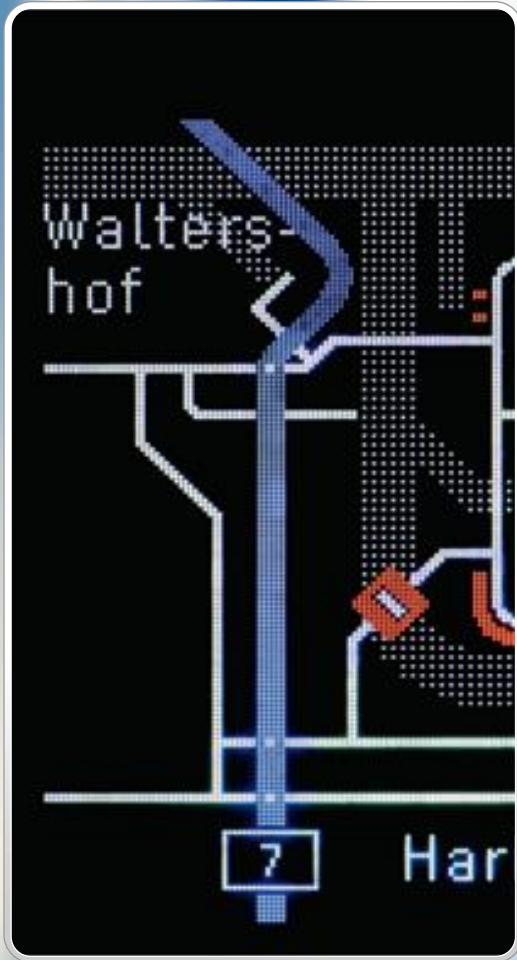
# PORT OF HAMBURG

## FACTS & FIGURES



# HAMBURG PORT AUTHORITY - HPA

## PORT ROAD MANAGEMENT



### Basic elements of Port Road Management (PRM)

comprehensive traffic detection (induction loops, video detection, Weigh in Motion (WIM), Bluetooth)

dynamic traffic information boards, to minimize the effects of grid disturbances

### Concept PRM

graphical representation of information on the overall situation

text panels for track-based information at strategic nodes

### Ideas for a individual traffic steering

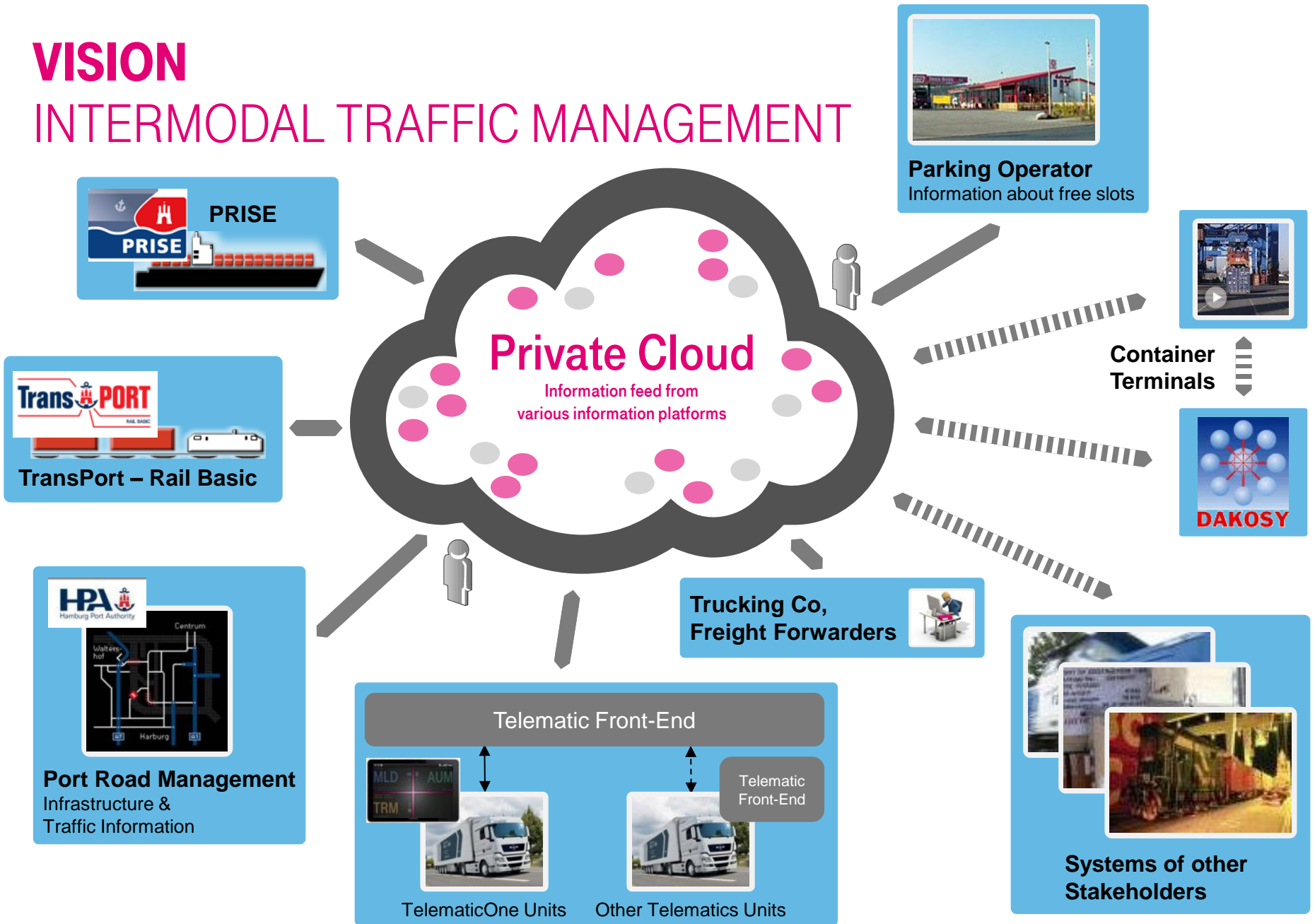
driver gets information from the Port Road Management Center in time about the traffic situation

messages are also available for the driver after passing the graphical information displays.

drivers get offered value-added services (eg, display of free parking at the next two rest houses on the route, traffic conditions)

# VISION

## INTERMODAL TRAFFIC MANAGEMENT





Once the **information** of the three transport modes are **united** in one system, [...] the Port of Hamburg could take **a leadership** over other competitors in **IT-supported business processes** in port industry.

# INFRASTRUCTURE AND SERVICE PROVIDERS FEED THE SYSTEM WITH UP-TO-DATE INFORMATION AND ENABLE USERS TO MAKE SMART DECISIONS



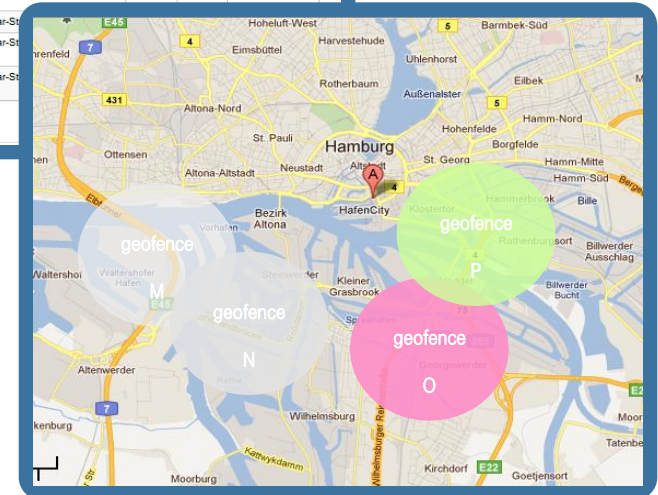
**Störquellen**

Quelle:

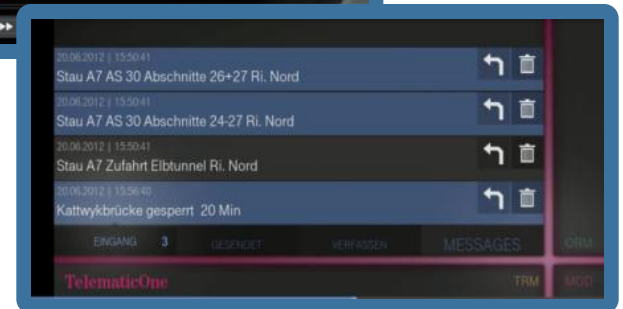
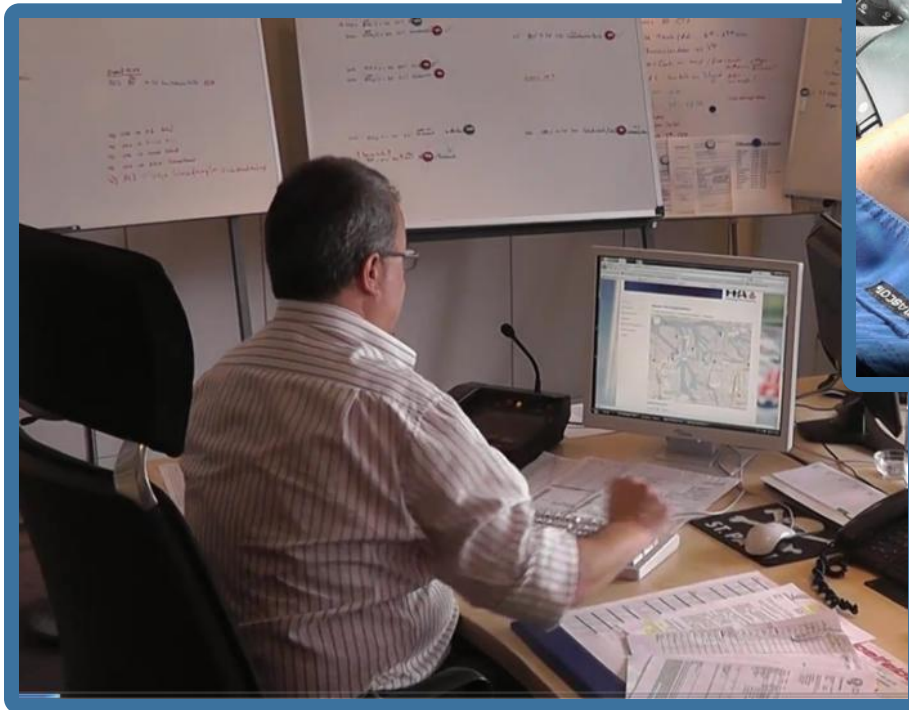
Zeige 10

Originaler Text	Bearbeiteter Text	Priorität	Quelle	Aktionen
Altenwerder Hauptdeich Ri. Ost gesperrt	Altenwerder Hauptdeich Ri. Ost gesperrt	1	HFA	<a href="#">bearbeiten</a>
Baustelle Köhlbrandbrücke	Baustelle Köhlbrandbrücke	4	HFA	<a href="#">bearbeiten</a>
Dradenauer Deichweg gesperrt	Dradenauer Deichweg gesperrt	1	HFA	<a href="#">bearbeiten</a>
Finkenwerder Ring Ri. Ost gesperrt	Finkenwerder Ring Ri. Ost gesperrt	1	HFA	<a href="#">bearbeiten</a>
Finkenwerder Ring Ri. West gesperrt	Finkenwerder Ring Ri. West gesperrt	1	HFA	<a href="#">bearbeiten</a>
Finkenwerder Straße Ri. Ost gesperrt	Finkenwerder Straße Ri. Ost gesperrt	1	HFA	<a href="#">bearbeiten</a>
Finkenwerder Straße Ri. West gesperrt	Finkenwerder Straße Ri. West gesperrt	1	HFA	<a href="#">bearbeiten</a>
Hohe-Schaar-Straße Nord gesperrt	Hohe-Schaar-Straße Nord gesperrt			
Hohe-Schaar-Straße Nord Ri. Nord gesperrt	Hohe-Schaar-Straße Nord Ri. Nord gesperrt			
Hohe-Schaar-Straße Nord Ri. Süd gesperrt	Hohe-Schaar-Straße Nord Ri. Süd gesperrt			

Zeige 1 bis 10 von 139 Einträgen

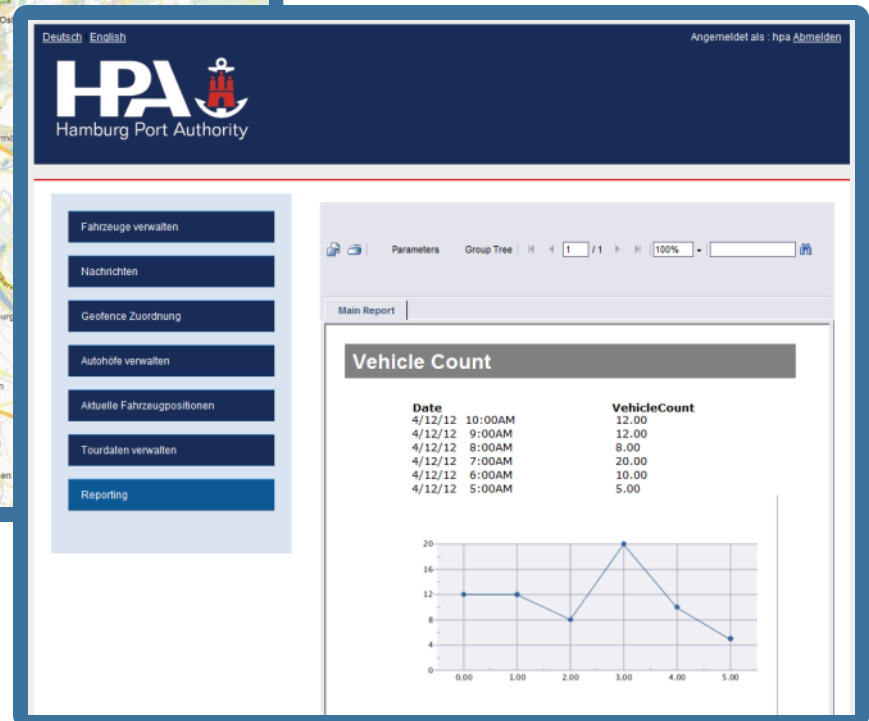
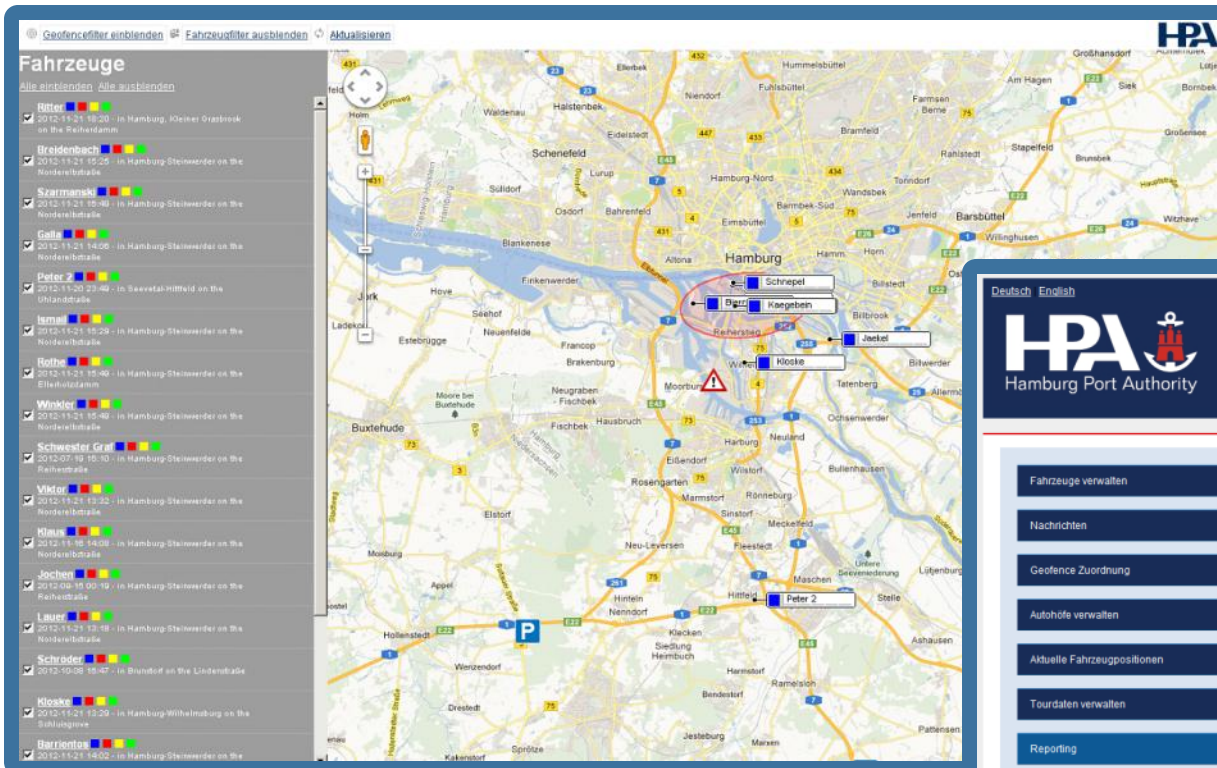


# INFRASTRUCTURE USERS GET PERSONALIZED SET OF RELEVANT TRAFFIC & INFRASTRUCTURE INFORMATION RIGHT IN TIME TO OPTIMIZE THEIR BUSINESS



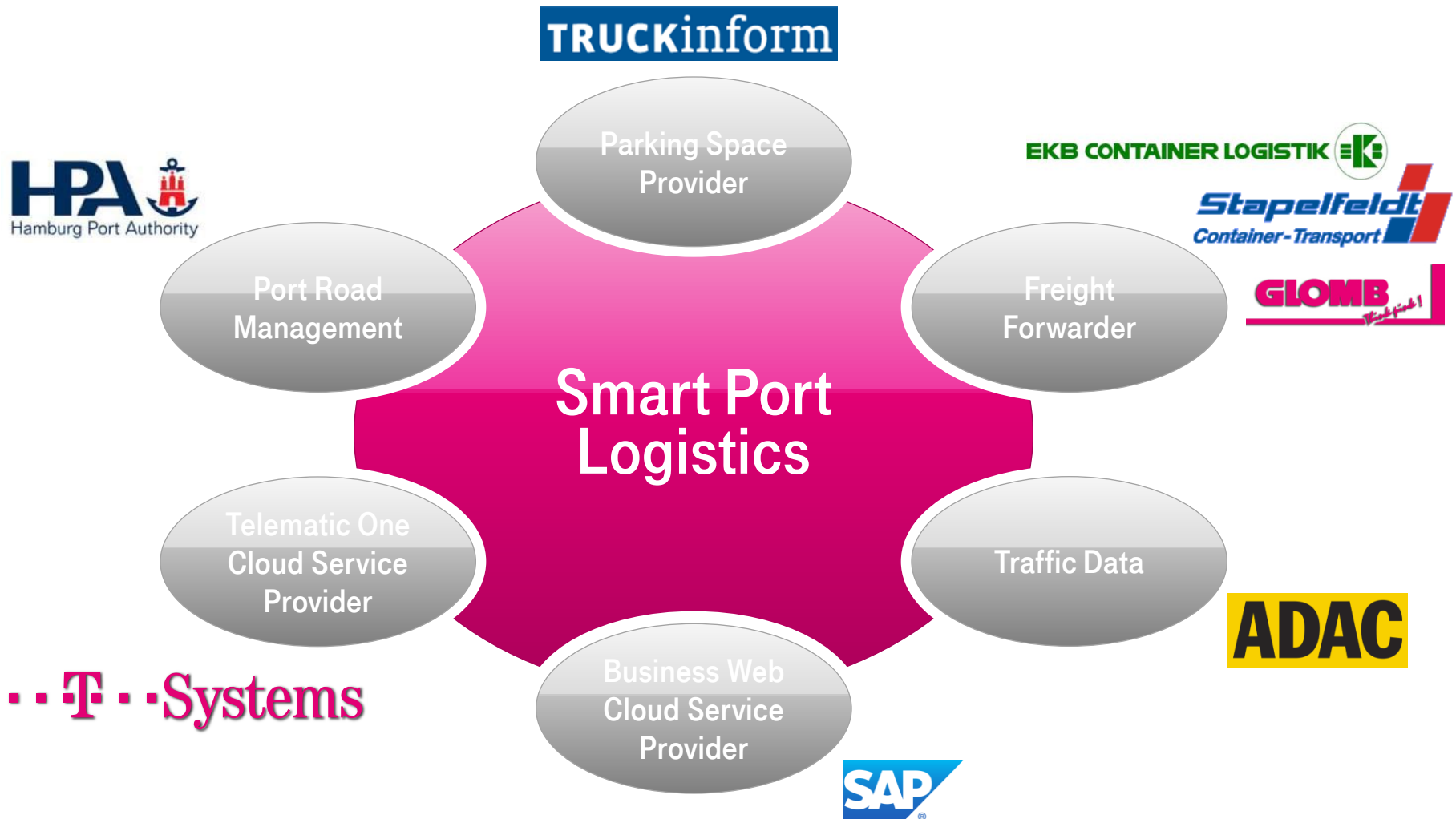


# FLOATING CAR DATA FROM FREIGHT FORWARDERS PROVIDE A VALUABLE INPUT TO INFRASTRUCTURE ASSESSMENT AND OPTIMIZATION



# SMART PORT LOGISTICS

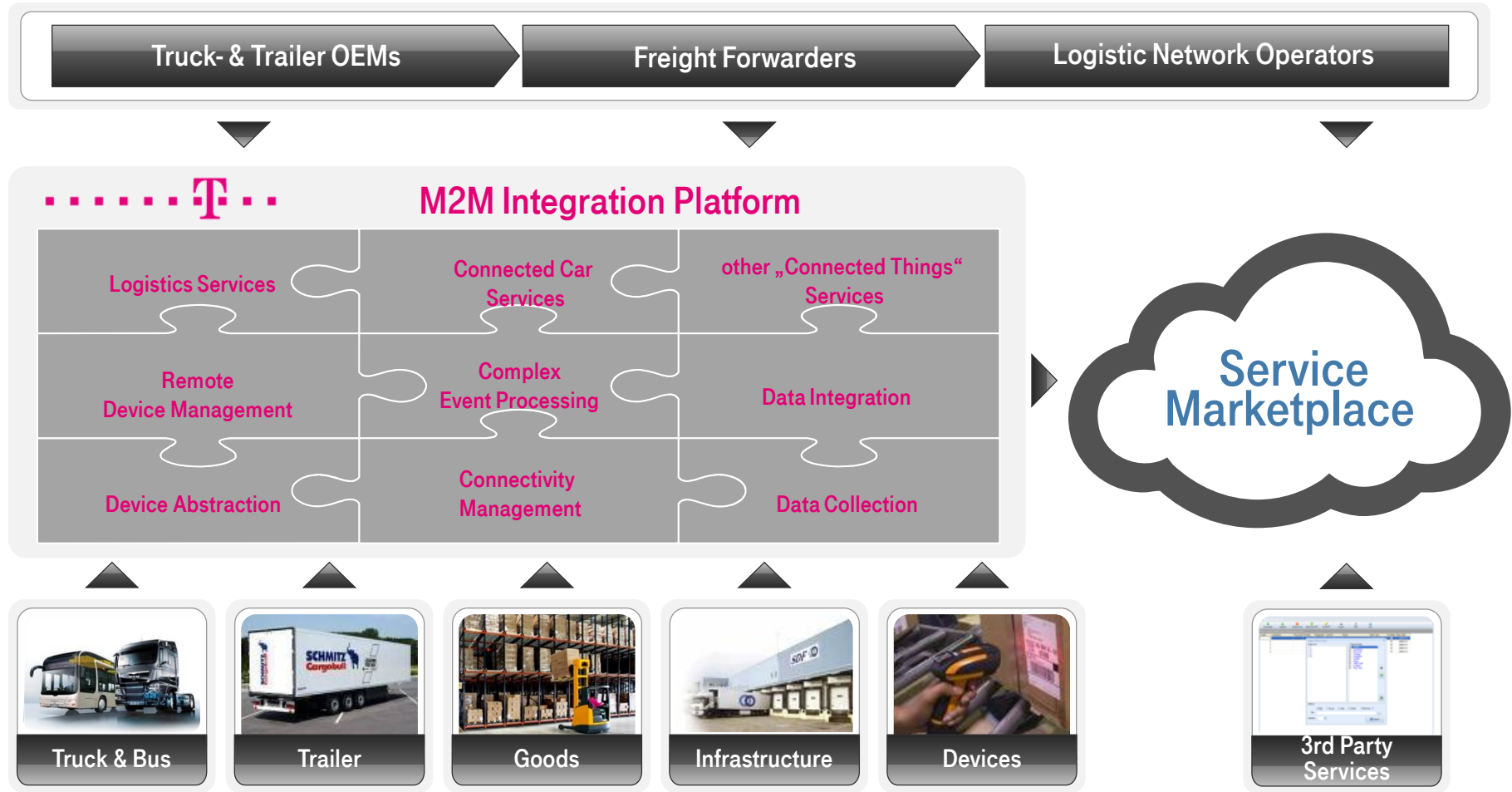
## FIELD TRIAL PARTICIPANTS



...T...Systems

T...Systems

# INTEGRATION & ENCAPSULATION OF M2M FUNCTIONALITIES WITHIN DT'S M2M INTEGRATION PLATFORM. SERVICE EXPOSURE THROUGH AN OPEN SERVICE MARKETPLACE



# THANK YOU!

## Markus Lindemann

**Contact** Telefon +49 5361 186-526  
Mobile +49 151 14823333  
E-Mail [markus.lindemann@t-systems.com](mailto:markus.lindemann@t-systems.com)

Head of Global Competence Center  
Embedded & Machine 2 Machine Solutions  
Alessandro-Volta-Str. 11, 38440 Wolfsburg

**T · · Systems ·**